

Prepared by and Return to: Linn County Secondary Road Department, 1888 County Home Road, Marion, Iowa 52302, (319)892-6400

RESOLUTION # 2019-9-131

ESTABLISH ROAD CLOSURE AND DETOUR FOR PROJECT

WHEREAS: Linn County Project BRS-SWAP-C057(143)—FF-57, Bridge Replacement project, on Central City Road (E16) in Linn County will begin soon

WHEREAS: this project lies on a marked Farm-to-Market route, and

WHEREAS: a detour must be established to close a marked route for longer than 48 hours, and

WHEREAS: a map of the detour is attached hereto.

NOW, THEREFORE, BE IT RESOLVED: that the Linn County Board of Supervisors hereby authorize and direct the Linn County Engineer to place the appropriate signs to establish the following detour: commencing at the intersection of Franklin Street and Grubb Street, head south on Franklin Street for 1.2 miles to N Center Point Road(W36), then southeasterly on N Center Point Road for 6.5 miles to Alice Road (W45), then north on Alice Road for 5.9 miles to end of detour. (See attached map)

Signs shall be placed when and as necessary to protect the work and the traveling public in accordance with the Manual on Uniform Traffic Control Devices and Chapter 306 of the Code of Iowa.

Moved by Supervisor Rogers Seconded by Supervisor Olson
that the above resolution be adopted this 11th day of September, 2019 by a vote of 3 aye 0 nay and 0
abstain from voting.

BOARD OF SUPERVISORS
LINN COUNTY, IOWA

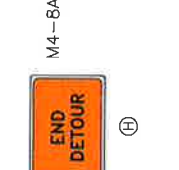
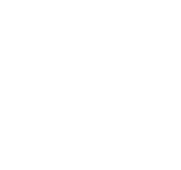
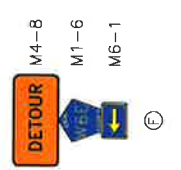
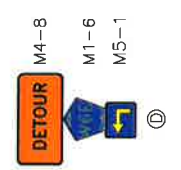
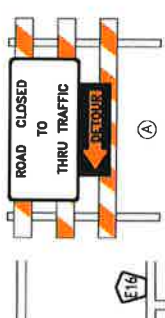
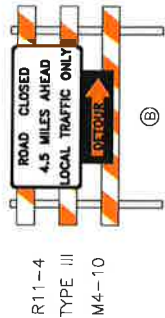
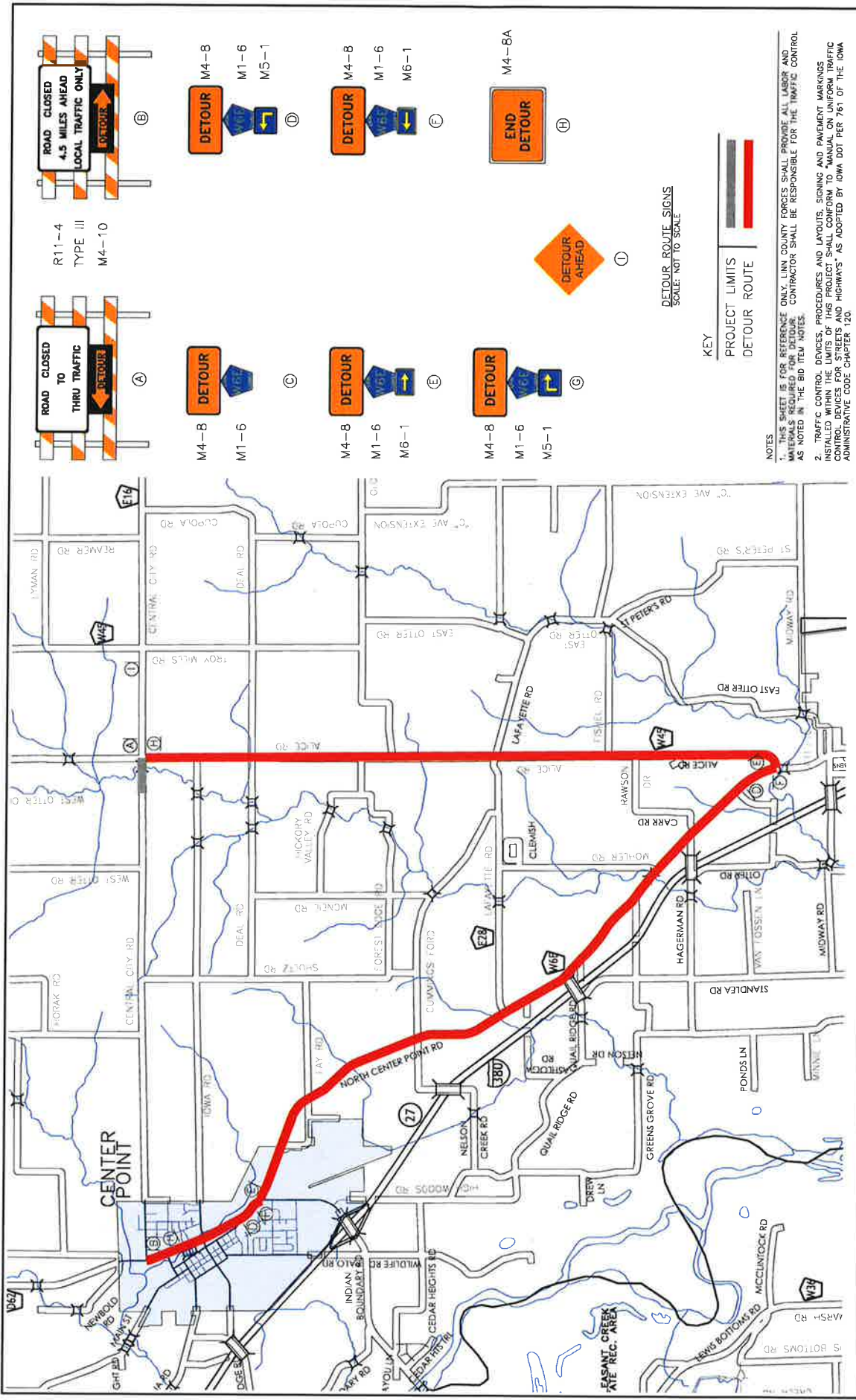
[Signature]
Chairperson

[Signature]
Vice Chairperson

[Signature]
Supervisor

ATTEST:

[Signature]
Linn County Auditor



DETOUR ROUTE SIGNS
SCALE: NOT TO SCALE

KEY
PROJECT LIMITS
DETOUR ROUTE

NOTES
1. THIS SHEET IS FOR REFERENCE ONLY. LINN COUNTY FORCES SHALL PROVIDE ALL LABOR AND MATERIALS REQUIRED FOR DETOUR. CONTRACTOR SHALL BE RESPONSIBLE FOR THE TRAFFIC CONTROL AS NOTED IN THE BID ITEM NOTES.
2. TRAFFIC CONTROL DEVICES, PROCEDURES AND LAYOUTS, SIGNING AND PAVEMENT MARKINGS INSTALLED WITHIN THE LIMITS OF THIS PROJECT SHALL CONFORM TO "MANUAL ON UNIFORM TRAFFIC CONTROL DEVICES FOR STATES AND HIGHWAYS" AS ADOPTED BY IOWA DOT PER 761 OF THE IOWA ADMINISTRATIVE CODE CHAPTER 126.